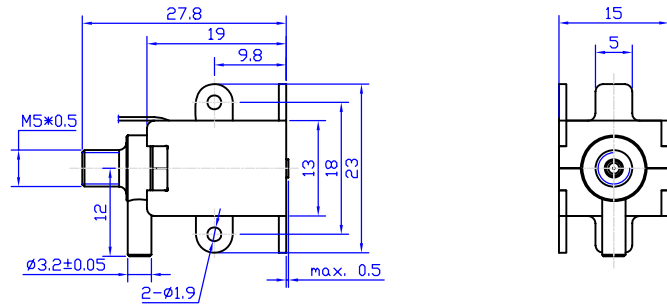


ZHV-0419L Solenoids Valve



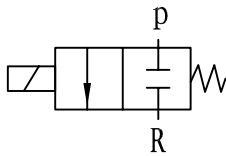
总重量 Total Weight: 14g
应用范围: 医疗设备等
APPLICATION: MEDICAL TREATMENT EQUIPMENT etc

类型: 二位三通 TYPE: Two way two port



单位:mm Units:mm

常闭排气型
(Gas use)
normal close



综合特性 GENERAL FEATURES

- 常用压力: 4781mmHg
In common use pressure: 4781mmHg
- 使用电压范围: DC4.5 ~ 6V
Use voltage range: DC4.5 ~ 6V
- 电流: 120mA (at DC 6V 20°C)
Current: 120mA (at DC 6V 20°C)
- 寿命: 典型值为10万次 (连续)
LIFE : REPETITIVE OPERATION FOR 0.1 MILLION CYCLE (CONTINUOUS)
- 绝缘等级: B类
Insulation class: class B

COIL DATA线圈资料

Duty cycle (%) = $\frac{\text{"ON" time}}{\text{"ON" time} + \text{"OFF" time}} \times 100\%$		Continuous (100%)	Or less (50%)	Or less (25%)	Or less (10%)
工作周期 (%) = $\frac{\text{工作时间}}{\text{工作时间} + \text{断开时间}} \times 100\%$		连续 (100%)	间断 (50%)	间断 (25%)	间断 (10%)
MAX. "on" time in seconds 最大工作时间 (秒)		∞			
Watts at 20°C 瓦特数 (在20°C)		0.72			
Ampere-turns at 20°C 安匝值 (在20°C)		192			
Type no.	Resistance (20°C) $\Omega \pm 10\%$	No. Turns	VoltS DC 电压		
型号	阻值 (Ω) $\pm 10\%$	线圈匝数			
ZHV-0419L	50	1600	6		